

SECUREALARMS

SECURITY SYSTEMS LTD

FIRE & SECURITY

Call 01202 737025 or visit www.secure-alarms.co.uk

FIRE ALARMS & SAFETY LAW

The Regulatory Reform (Fire Safety) Order 2005



ASSESSING THE RISK

Since 1st October 2006, the laws governing fire risk have been tightened. It is now a requirement that in non-domestic buildings (including managed flats), a responsible person must carry out an annual fire risk assessment. This is an organised appraisal of your work activities and workplace to identify fire hazards, evaluate the risks and assess whether existing fire precautions are adequate or whether more needs to be done, such as installing a fire alarm system...



SP203 - Part 1
Modular Scheme



KM 571754



PART
Electrical safety



The Nationwide Association of
Security Installation Companies

Checkatrade.com

✓ Recommended
✓ Vetted
✓ Monitored

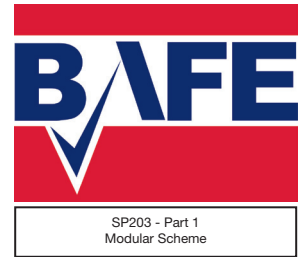


Certificate No 00000197

DON'T TAKE THE RISK... ENSURE YOUR SAFETY WITH OUR FIRE ALARM SYSTEMS

SECURE ALARMS ACCREDITATION

Secure Alarms design and install fire alarm systems for both commercial and residential properties. Secure Alarms are accredited to 'British Alarm and Fire Equipment' (BAFE) SP203 approved to: Design, install, commission, handover, verify and maintain fire alarm systems, in accordance with British and European standards.



MAINTENANCE & MONITORING

Insurers and the Chief Fire Officers Association (CFOA) expect 'installation and maintenance' to meet the BS/EN and BAFE Standards. It is a BS/EN requirement for fire alarm systems to be fully maintained and tested at least twice a year by qualified staff. Secure Alarms also provide a 24-hour service to affect repairs. Remote, 24-hour monitoring of the alarm ensures both the key holder and Fire Brigade are notified of activations.

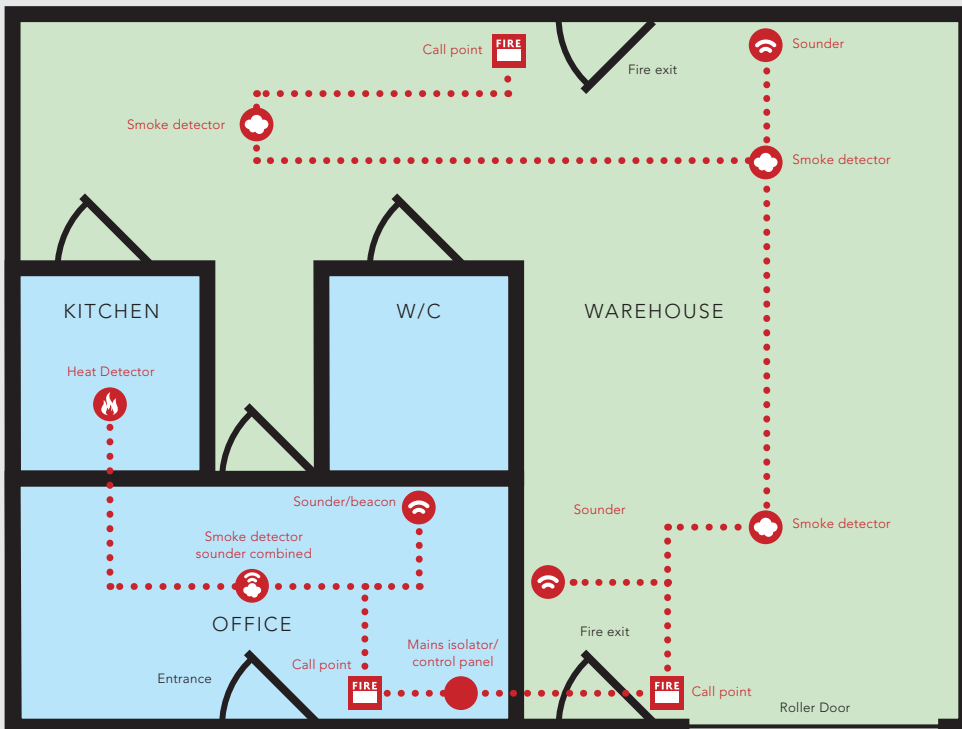
WE ONLY INSTALL OPEN SYSTEMS

Secure Alarms do not sell systems that include 'closed protocol alarm panels and detectors'. Such systems are only sold via a manufacturer's appointed agent, thus limiting your choice of service provider. Buyers of such closed protocol systems have found, to their dismay, just how expensive a mistake it can be, leaving them 'ball & chained' to the installation company and their increasingly expensive service prices!







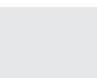
WHY CHOOSE US?

- BAFE approved installation
- Designed by Fire Industry Association (FIA) trained surveyors
- The system is sold outright
- 1 Year parts and labour warranty
- Loss Prevention Certificate Board approved equipment
- Open protocol systems
- No bespoke components (serviceable by any reputable provider)

TYPICAL FIRE ALARM PLAN



KEY COMPONENTS

-  Fire alarm control panel
-  Smoke detector sounder combined
-  Heat detector
-  Sounder/Beacon
-  Smoke detector
-  Mains Isolator
-  KAC manual breakglass call point
-  Sounder